



RUST SEAL

CRC Rust Seal is the ideal pretreatment before painting rusted metal. It stops the corrosion process by forming a black protective barrier that seals off the rust from moisture. This way, it transforms corroded metal into an easily paintable surface without any time-consuming sandblasting. After drying, paint can be directly applied.



Features:

- Protects the topcoat against corrosion
- Fast-drying: repaintable after 2 hours
- Water-based: safe to use and environmentally friendly
- Time-saving: minimal surface preparation required (no need for sandblasting)
- Good adhesion with the surface and the topcoat
- Also effective without topcoat

Applications:

All rusted metal materials such as pipes, valves, fittings, storage tanks, fences, conveyors, containers...

Ref.	SIZE
33349	Jar 750 ml

WATER-BASED CORROSION PROTECTION: HOW DOES THAT WORK?

Water-based and corrosion protection are two terms that do not seem to match but actually they do! The water evaporates during the drying process and will not stimulate the corrosion process. The biggest benefit of a water-based product is that it is safe to use and environmentally friendly.

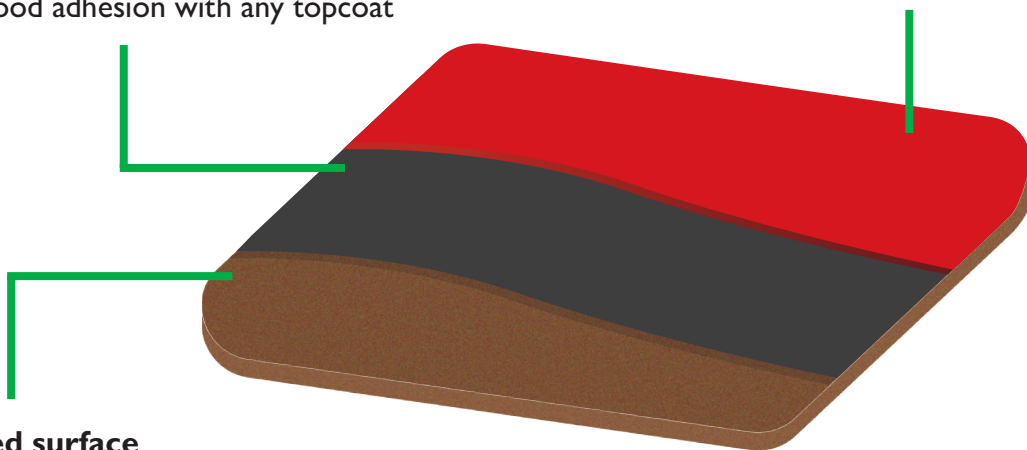
DON'T TRUST RUST! SEAL THE DEAL!

CRC Rust Seal

- Tough barrier against moisture
- Completely seals off the rust
- Good adhesion with any topcoat

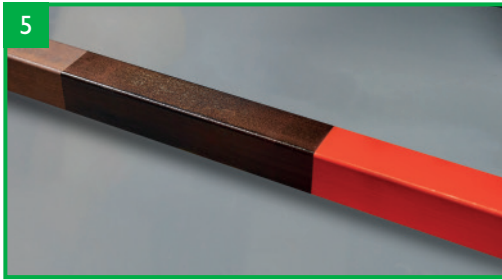
Topcoat

- Paint with CRC Acrylic Paint for maximum gloss.
- Paint with CRC Galva Color for ultimate corrosion protection.



Rusted surface

- No need to make the surface rust-free before painting. You should only remove loose rust.
- No sandblasting needed



1. REMOVE LOOSE RUST

CRC Rust Seal can be applied directly on rust but for the best result, loose rust should be removed with a wire brush. Time-consuming sandblasting is not necessary.

2. CLEAN SURFACE

Use a degreaser, e.g. CRC Fast Dry Degreaser, to clean the surface. The surface must be clean and free of oil, dust and grease.

3. APPLY CRC RUST SEAL

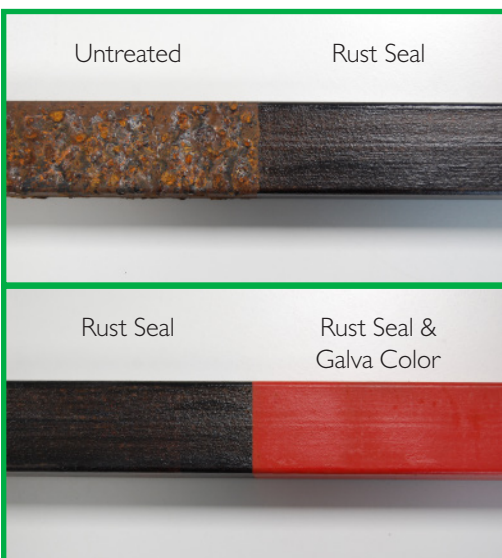
Shake the jar firmly or stir for at least one minute. Apply a thin, even coat of Rust Seal directly on the rusted surface with a brush or a roller. Let dry for 2 hours. CRC Rust Seal will form a tough barrier while drying. Rinse off your brush or roller with water immediately after use.

4. APPLY TOPCOAT

For maximum shine or a specific color, choose CRC Acrylic Paint as a topcoat. For ultimate corrosion protection, use CRC Galva Color. Follow the instructions of use of each product.

5. FINISHED RESULT

RUST SEAL PUT TO THE TEST: 500 HOURS OF SALT SPRAY



TEST: A rusted beam is being treated with CRC Rust Seal. On half of the treated area, CRC Galva Color is applied as a topcoat. The plate is being put in a highly corrosive salt spray cabinet for 500 hours.

RESULT: We do not see any corrosion on the treated areas. CRC Rust Seal has formed a tough barrier between the rust and the topcoat. The topcoat is still in perfect condition; it has not been affected by the corrosion, there is no blister formation thanks to the good adhesion with CRC Rust Seal and the colour and shine have not faded.



WATCH THE DEMO VIDEO HERE!